



D E L F Í N
A M A Z O N C R U I S E S






PERU



PACAYA SAMIRIA NATIONAL RESERVE







As pioneers in the Peruvian Amazon, we open the river's secrets to those who seek wonder, connection, and meaning.



DELFIN AMAZON CRUISES

TIMELINE



We are now
SERANDIPIANS
By Traveller Made


**RELAIS &
CHATEAUX**



2006

The first
Delfin I

2009

Delfin II

2011

Delfin I
refurbished

2016

Delfin III

2017

We became
part of
Traveller Made

2017

We became
the first Relais
& Châteaux
River Cruise

2025

The New
Delfin I

2026

Delfin II
refurbished



THE FIRST CRUISE IN RELAIS & CHÂTEAUX PORTFOLIO.



WOVEN BY NATURE,
CRAFTED FOR YOU
Is more than a statement, it's a promise.



EMBARKATION PORT





DELFIN I:
Every Monday and Thursday



DELUXE MASTER SUITE

Cabin: 360 Sq.Ft / 34m²

Terrace: 320 Sq.Ft / 32m²

Maximum occupancy: 3 pax

Private outdoor terrace with jacuzzi



DELUXE MASTER SUITE





MASTER SUITE

Cabin: 360 Sq.Ft / 34m²

Terrace: 320 Sq.Ft / 32m²

Maximum occupancy: 3 pax



ANACONDA



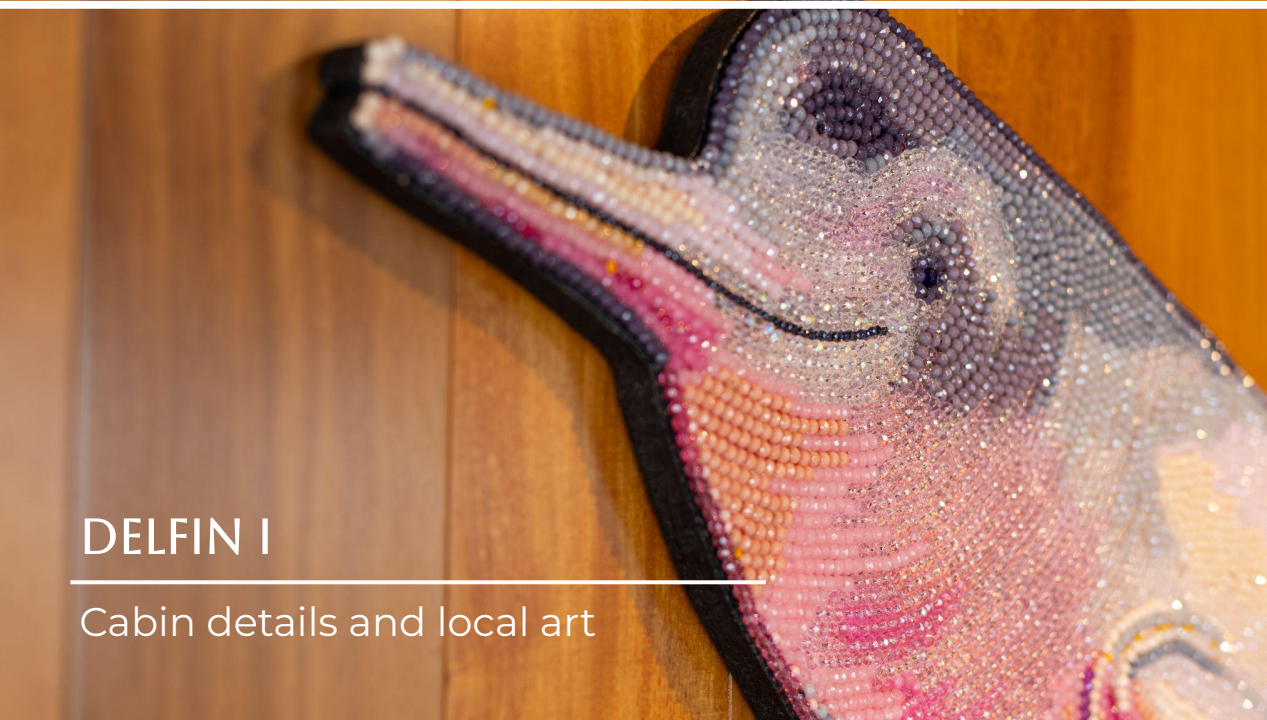
IGUANA



DELFIN

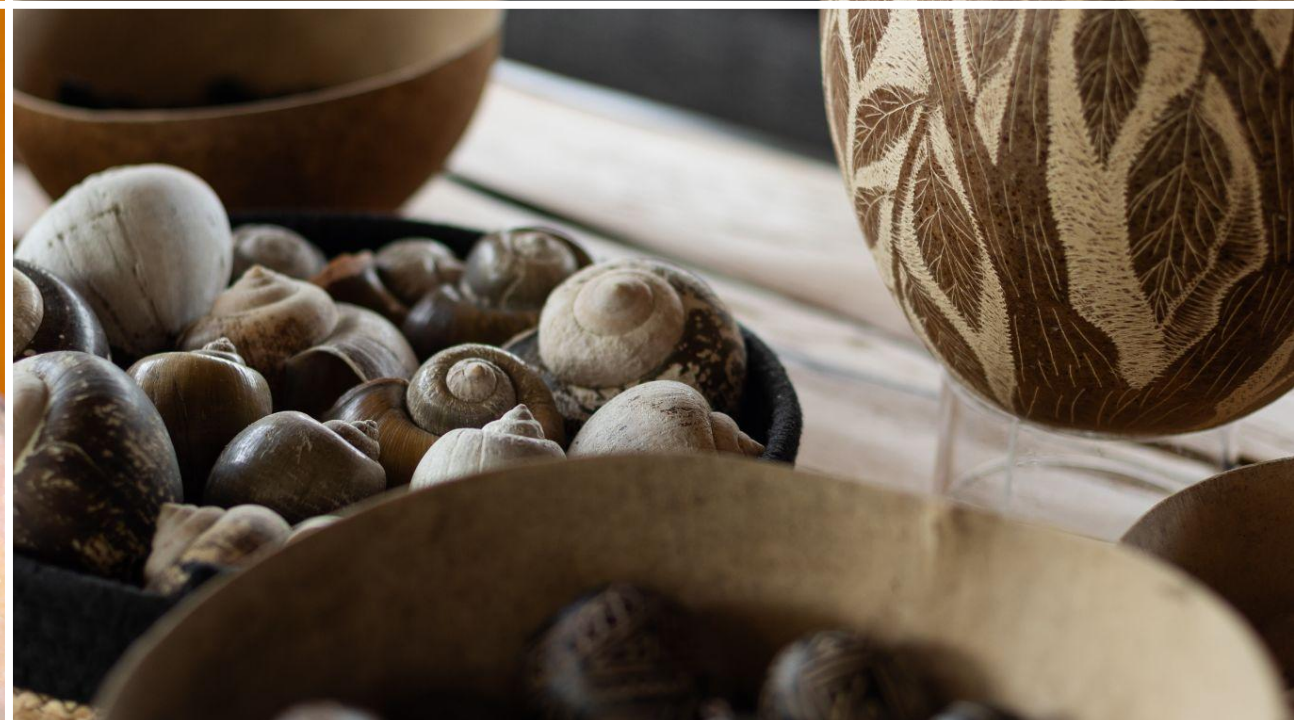


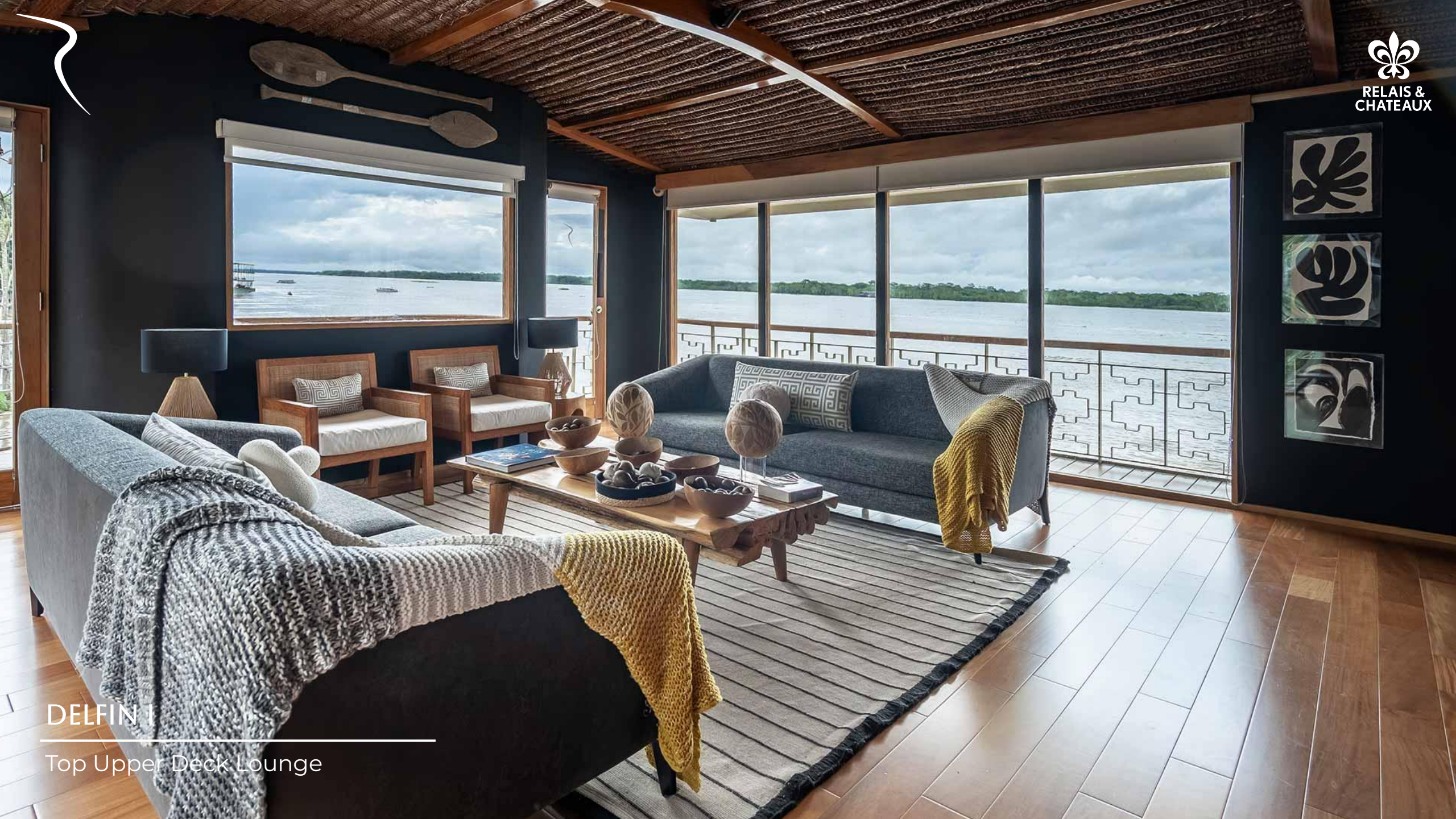
MORPHO



DELFIN I

Cabin details and local art





DELFIN I

Top Upper Deck Lounge



DELFIN I

Top Upper Deck Lounge



DELFIN I

Top Upper Deck Bar

DELFIN I

Dining Room





DELFIN III:

Every Saturday and Tuesday

OWNER'S SUITE

Cabin: 597 Sq.Ft / 55m²
Maximum occupancy: 3 Pax





CORNER SUITE

Cabin: 552 Sq.Ft / 23m²

Maximum occupancy: 3 Pax



UPPER SUITE / SUITE

Cabin: 236 Sq.Ft / 22m²

Maximum occupancy: 2 Pax





DELFIN III
Dining Room





DELFIN III

Outdoor Lounge (Upper Deck)



DELFIN III

A/C Indoor Lounge (Upper Deck)



RELAIS &
CHATEAUX



DELFIN III

Bar



RELAIS & CHATEAUX



DELFIN III

Sun Deck



RELAIS &
CHATEAUX



DELFIN III

Spa



DELFIN III

Exercise room



Cooking Session



Fruit Demonstration

ON BOARD ACTIVITIES

- Wildlife Lectures
- Jungle Fruits Demonstrations
- Cooking Session
- Live Music Entertainment



**RELAIS &
CHATEAUX**


**PERUVIAN AMAZONIAN
GOURMET CUISINE**
A jungle to table dining experience





PACAYA SAMIRIA NATIONAL RESERVE

The jungle of mirrors



+1,025
vertebrate species

27%
of Peru's vertebrate diversity

36%
of the Amazon region's
vertebrate diversity

527
Birds

69
Reptiles

102
Mammals

58
Amphibians

269
Fish

+965
Plants





HIGH WATER SEASON

January through June

More Skiff Explorations

LOW WATER SEASON

July through December

More Trails Walks



HIGH WATER SEASON

Best time for migratory and resident birds
Herons, eagles, hoatzins, tanagers, jacamars,
kingfishers



LOW WATER SEASON

HWS birds + White and/or black caimans, Giant otters
Paiche fishing, the largest fish in the Amazon
Taricaya turtles on beaches and riverbanks



ACTIVITIES

Skiff expeditions



Three Toed Sloth

AMAZON WILDLIFE

A Safari in the jungle



Pichico Monkey



Pink River Dolphin



Pygmy Marmoset



Kingfisher



ACTIVITIES

Birdwatching



ACTIVITIES

Jungle Walk Trails



FLORA ON THE WALKS

Great diversity of palm trees

"Elephant ear" epiphytes (aroids)

Ferns, pepper-family plants

Medicinal plants

Coffee-family plants

Heliconias

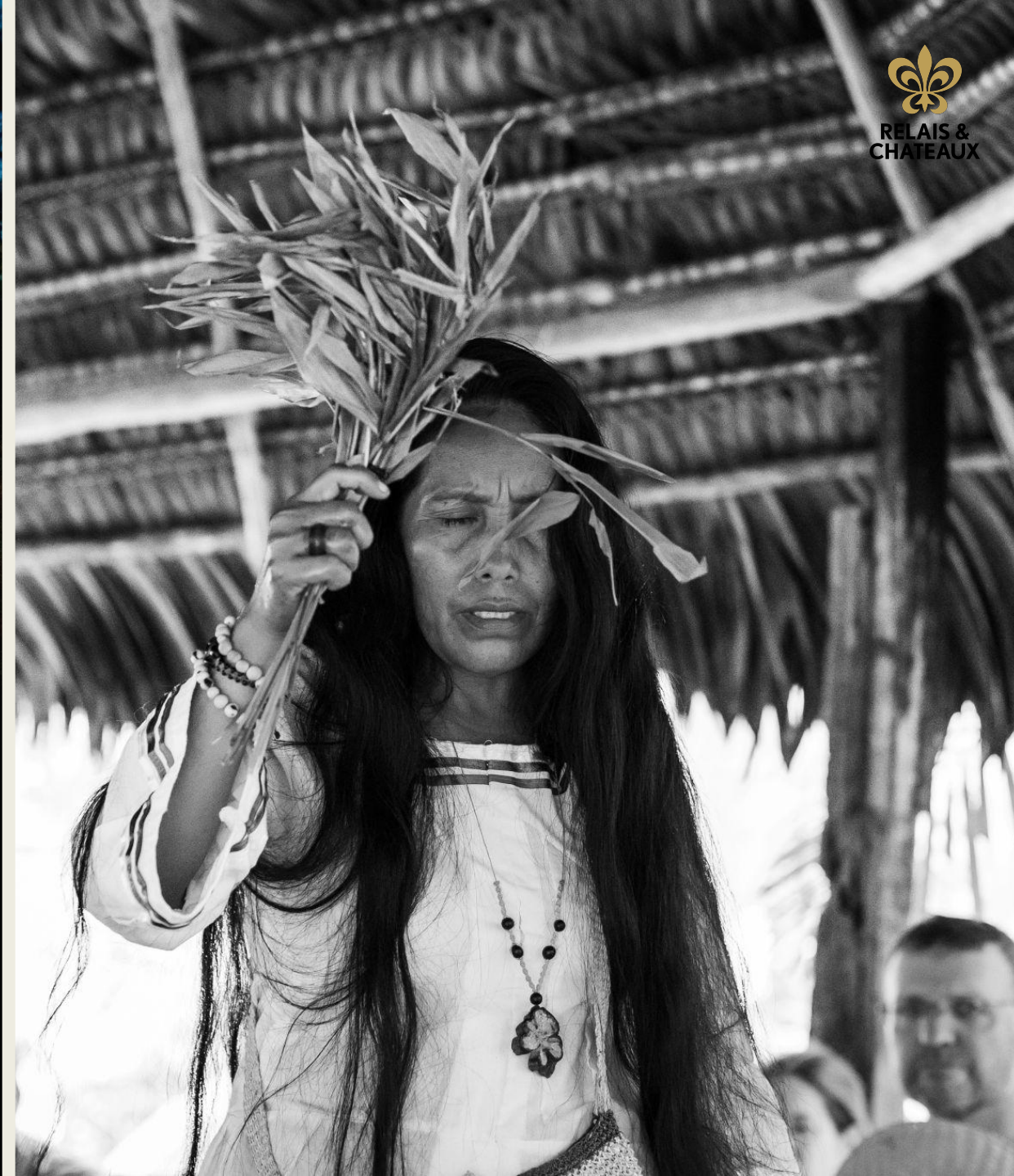
Species used by local communities for food and crafts





ACTIVITIES

Night Safari / Spiritual sessions





ACTIVITIES

Catch & Release / Paddle Boarding / Kayaking





ACTIVITIES

Community visit and handcraft market





ACTIVITIES

Breakfast in private lagoon, Delfin I only



ACTIVITIES

Melipona Stingless Bees and ARCOF





PACK WITH PURPOSE



WE ARE FAMILY
Children are welcome

Delfin I - 10 years +
Delfin III - 7 years +



WHERE AWE MEETS ACCOUNTABILITY:

Delfin Amazon Cruises' Commitment to Regenerative Travel



OUR COMMITMENT IS ALIGNED WITH:

- Relais & Châteaux and Unesco Alliance on Sustainable Hospitality.
- UN's Glasgow Declaration for Climate Action in Tourism.
- UN's Sustainable Development Goals.

OUR IMPACT PROGRAMS

BIOREST

Biocultural restoration corridor · Field schools · Thesis fellowships · Seed banking & traditional knowledge

RELATED PROGRAMS · measured and reported separately

CARBON FOOTPRINT

DAC carbon measurement, with Relais & Chateaux

CITIZEN SCIENCE: DOLPHINS

River dolphin population monitoring

CITIZEN SCIENCE: KEY SPECIES

Pacaya Samiria flagship species monitoring (late 2026)

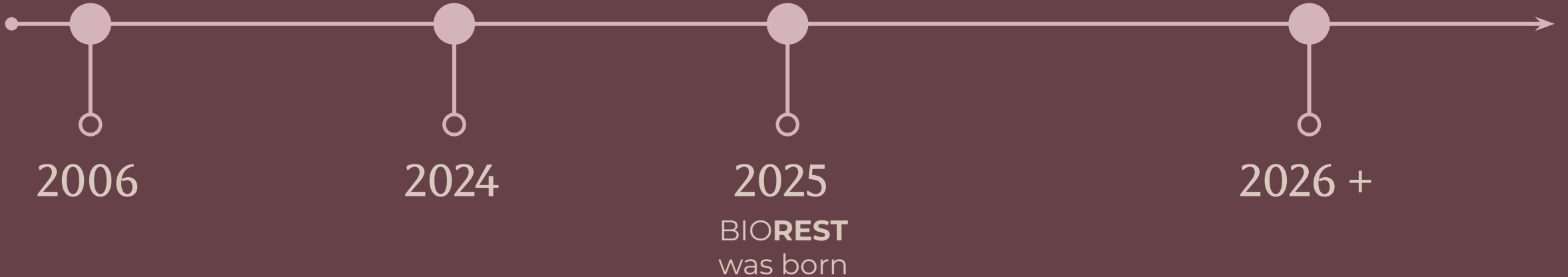
FROM ROOTS TO VISION

BIOREST TIMELINE

Every action reflects a passion for protecting the environment and ensuring the well-being of communities.

We assessed our impact and planned a continuous improvement strategy under the Relais & Châteaux and UNESCO alliance.

Establish BioRest as the regional model for biocultural restoration, bridging science and traditional knowledge via community-led conservation.



BIOREST

BIOCULTURAL RESTORATION

Transforming our sustainable operations into a tangible response to the global triple crisis, strengthening our path toward the SDGs.

This participatory, voluntary program has been implemented through a **collaborative agreement with three riverside communities** along the Marañón River, within the Pacaya Samiria National Reserve.





We are creating a restoration corridor on plots abandoned by traditional agriculture, using native species that are both useful and vulnerable to extinction, identified and prioritized according to the needs of the communities and global conservation challenges.

Our actions are based on ancestral knowledge and scientifically sound practices.



1,680

Native useful plants

17

Plant species

5 USES



Artisanal



Conservation



Food



Medicinal



Biocommerce

18

Families in three
communities

425- ACRE

Biocultural
restoration corridor



THESIS FELLOWSHIPS

DAC's Fellowship Program supports UNAP thesis research within the BioRest Program:
Restoring the Habitat of Neotropical Butterflies



FIELD SCHOOLS

Avitourism training



SEED BANKING

DAC's Forest School Program provides Horticulture techniques on wild species conservation through Restoration methodologies, including seed banking.

RIVER DOLPHIN RESEARCH

With nearly a decade of supporting pink dolphin research, DAC introduces its Citizen Science initiative. Guests and guides now play a direct role in monitoring river dolphin populations alongside experts.

Featuring three signature departures hosted by Dr. Joanna Alfaro.



By generating scientific data, this collaboration helps advance the National conservation targets.





SUPPORTING EFFORTS

Native Stingless Bee Project



SUPPORTING EFFORTS

Empowering women within the communities



SUPPORTING EFFORTS

Empowered communities: Prioritizing local and capacity enrichment.



NAUTA COLLECTION
By Jardín Azul for Delfin Amazon Cruises



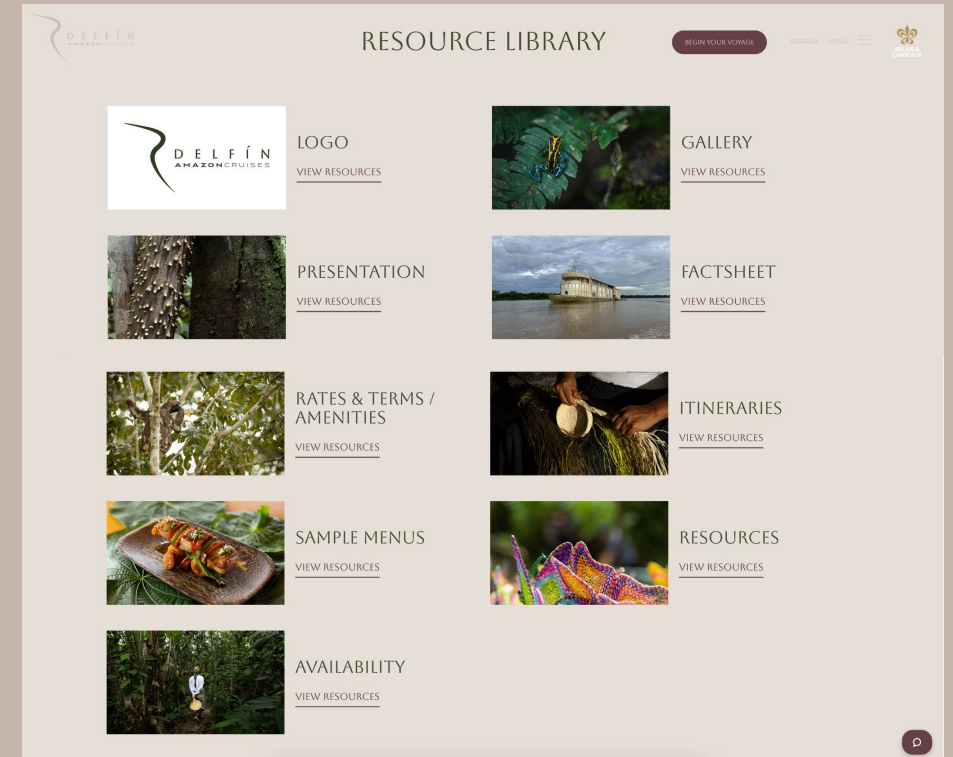
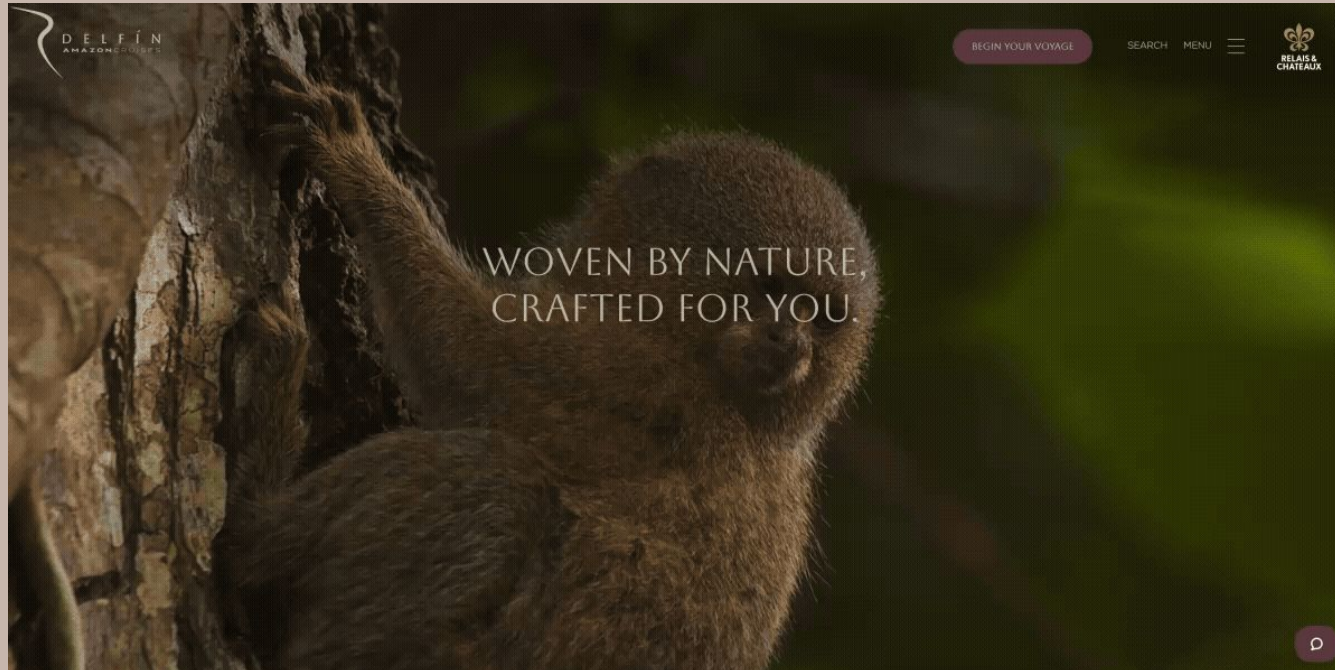

RELAIS &
CHATEAUX





IT'S TIME TO BELIEVE IN WONDER AGAIN

WWW.DELFINAMAZONCRUISES.COM



A dedicated portal where travel agents can access essential information and resources.

STARTING RATE PER NIGHT PER PERSON (3 & 4 NIGHTS PROGRAMS)

Delfín I, US\$1,800

Delfín III, US\$1,400

A SELECTION OF MEMBERSHIPS AND AWARDS



A SELECTION OF TRADE SHOWS





WELCOME ON BOARD!
info@DelfinAmazonCruises.com
www.DelfinAmazonCruises.com