

SUSTAINABILITY

At Delfin Amazon Cruises, sustainability is at the heart of everything we do. As a family-owned, Peruvian company, co-founders Aldo Macchiavello and Lissy Urteaga are deeply committed to preserving their home—the Amazon rainforest, and more specifically, the Pacaya Samiria National Reserve. Their hands-on involvement ensures that every aspect of the operation reflects their passion for protecting both the environment and the communities they serve. For Aldo and Lissy, the Amazon is not just a work destination; it's their second home, and they believe in safeguarding its people, wildlife, and forests for future generations. Their commitment to sustainability is woven into every journey, from conservation efforts to empowering local communities.

OUR STORY

At the beginning of our operations in 2006, as pioneers of luxury cruising in this region, while Aldo was supervising the construction of our first vessel, Lissy ventured into the Pacaya Samiria National Reserve with our first guide, Adonay Rodriguez, to explore the area, develop our itineraries, and, most importantly, connect with the local women. Recognizing their talented craftsmanship, Lissy shared her vision of bringing new tourists to the region and collaborated with the women to curate unique handcrafts made from palm fiber, naturally dyed with colors from fruits, leaves, roots, and bark. These handcrafts, often depicting local wildlife, would soon be displayed and sold directly to guests onboard our cruises.

Empowering women was always the goal—providing them with the opportunity to support their families. This initiative enriched their children's lives by expanding a trade passed down through generations, one that was at risk of being lost with modern artifacts coming into the jungle. What began with six women has now grown to include hundreds of artisans across the Amazon.

Their work is now showcased on improved tables instead of mud floors, and they proudly identify as "the butterflies of Yarapa." Lissy has built over eight markets for them across the National Reserve, and the sense of connection continues to flourish.

Today, these artisans see themselves as a unified workforce, enjoying sustainable year-round income, not just during the four months of forest abundance. They trust that we, along with other companies, will keep visiting, even though their remote communities are only accessible by boat. Their arts and crafts have become a primary source of livelihood.

Over the years, we've introduced various initiatives tailored to their needs. In one highland community, we developed a jungle trail that can be used year-round, collaborating with local men for its maintenance and employing them as guides. This partnership has been mutually beneficial, enriching both the community and our jungle excursions with local insights.

We've also coordinated pro bono healthcare initiatives, including vaccination campaigns and visits from an American dentist couple who, for three consecutive years, treated nearly 900 people per visit with the help of our staff. These campaigns, supported by partners like Colgate, provided medicine, instruments, and much-needed dental supplies, especially for children.



HERE ARE OUR MORE ICONIC EFFORTS:



ARTISAN COLLABORATIONS

As mentioned above, women empowerment was the mission, and we have accomplished it through the initiative Lissy had when we first started operations. Through whimsical handcrafts that guests buy to take back to their home countries, the lives of hundreds of families has been improved, and heritage art has been preserved to continue from generation to generation in a family affair that respectfully uses what the forest gives us.

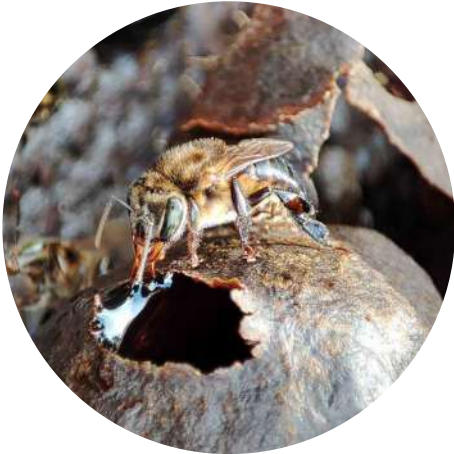
CHONTA PROJECT

Chonta, or heart of palm, is a key ingredient in local Amazonian dishes, particularly salads. Since harvesting chonta requires cutting down the palm tree. Delfin partners with local growers to donate three palm trees for every one cut, ensuring sustainable reforestation. This project supports local farmers and ensures the availability of chonta while promoting environmental conservation.



FARM TO TABLE & LOCAL SCHOOLS

Delfin owns a piece of land near Iquitos, by our sister property Al Frio y Al Fuego floating restaurant. Through its farm-to-table garden initiative, Delfin engages local school children in gardening activities. Inspired by this program, children have started gardening at home, improving their diets and promoting healthier eating habits within their communities.



BEE PROJECT

In 2023, Delfin launched the Bee Project in collaboration with BioAmaz through their Bee Queen Coin initiative. Delfin donates beehives to local communities, promoting sustainable beekeeping. Villagers can sell honey, bee wax, pollen, and propolis or keep them for personal use. This initiative not only enhances local diets but also boosts crop pollination, supporting both the environment and economic stability.

PINK RIVER DOLPHINS CONSERVATION

Delfin partners with Pink River Dolphin Specialist Dr. Joanna Alfaro to protect the endangered pink river dolphin. Guests onboard the Delfin III have the unique opportunity to become Citizen Scientists, participating in research by deploying Acoustic Seapods to record dolphin sounds. Guests also assist in collecting data on dolphin sightings and attend Q&A sessions hosted by Dr. Alfaro, gaining deeper insights into conservation efforts for this species.



HELPING HANDS



Delfin Amazon Cruises has a “Helping Hands” initiative focused on supporting villages within the Pacaya Samiria National Reserve. Although there are nearly 200 villages of various sizes in the area, Delfin connects with at least 15, which they encounter along the Marañon and Ucayali rivers during their expeditions. Lissy Urteaga, the naturalists, and the Operations team maintain close contact with these communities, responding to their needs by providing tangible resources like water filtration systems, boat engines, and annual school supplies. Delfin’s paramedic visits weekly, offering medicine and healthcare instructions. This initiative is driven by a commitment to bring practical help and build relationships, rather than adopting a paternalistic approach of simply giving money.

Our approach to sustainable tourism is evident in the following aspects:

Environmental conservation: We fully work to minimize the impact on the Amazonian ecosystem by implementing waste management practices, energy efficiency in our engines, and measures to protect local biodiversity.

Commitment to local communities: DAC actively collaborates with local communities to support sustainable development projects, covering areas such as education, health, and preservation of local culture.

Education and awareness: During our trips, we provide information on the importance of Amazon conservation and how passengers can contribute to sustainability once they are back home.



Local culture is integrated into the experience of its journeys through the Peruvian Amazon, standing out in:

Local personnel: Our crew is all from local communities, we are proud of being Peruvian and Amazonian, and we pride on the chance for travelers to interact with individuals possessing profound knowledge of the region and its culture.

Cultural activities and presentations: During cruises, we organize activities highlighting the rich local culture, such as music performances, traditional dances, or local fruit exhibitions, allowing guests to immerse themselves in the authenticity of Amazonian culture.

Local cuisine: We offer travelers the opportunity to taste traditional dishes and flavors of the region, using local ingredients like Paiche, Sacha Culantro, Ají Charapita, Camu Camu, etc, and typical Amazonian recipes done in Delfin style. Integrating local culture into the travel experience not only enriches guests' stays but also promotes respect, appreciation, and preservation of the traditions and cultural heritage of Amazonian communities.

We are proudly the first cruise company that ever joined Relais & Chateaux association, where elevated culinary experiences and sustainability go hand in hand in authentic properties with exceptional personalized service, this is what our guests will experience in this culinary journey.





SUSTAINABLE PRACTICES

WHAT WE DO

- ✎ We give a reusable water-bottle to all of our passengers, and we use reusable straws at the bar. We are on a mission to eradicate all plastic, there are supply chain challenges that arise due to the remoteness of our destination.
- ✎ We recommend our passengers to purchase souvenirs from remote communities rather than tourist shops.
- ✎ Our naturalists guides encourage environmental awareness to all of our passengers. In our excursions, they teach about the flora and fauna of the Amazon Rainforest and the importance of respecting nature.
- ✎ Most of our decorations are eco-friendly, using natural materials and sustainable processes to add style without compromising the environment.
- ✎ From our technical side we have invested to build vessels that leave zero waste into the river, and are committed to leaving the area better than we find it.
- ✎ Our amenities are crafted with organic, environmentally friendly products, and we use them in refillable glass bottles.
- ✎ For the fruits and vegetables that we can't supply from our own garden, we use fruits and vegetables from local organic crops and from small farmers to encourage local work.

WHAT WE DON'T DO

- ✎ We do not allow passengers to touch any wild animals or pick flowers. It is best to observe them from where you stand.
- ✎ We recommend not purchasing any souvenirs made from animal products or parts.
- ✎ The local villagers are our friends, we encourage passengers to ask permission before taking photos of them.
- ✎ Instead of offering disposable slippers to our guests, we offer them flip flops which are later donated to the communities. Reducing our waste on this to a minimum.





BE A HELPING HAND

Before your trip, pack mindfully and bring essential items that will make a difference to the communities we visit. Here are a few ideas of what to pack:

- School supplies
- Children's vitamins
- Toothbrushes
- Gently used clothing

If you have extra space in your luggage, these contributions can go a long way.